



ELDORADO  
COUNTRY CLUB

## Holiday Hours of Operation

### Christmas Eve

Office  
9:00 am – 2:00 pm  
Golf Shop:  
Last golf cart in by 3pm  
Sports Grill:  
7:00 am – 3:00 pm  
Tennis Shop:  
8:30am – 2:00 pm

### Christmas Day

Club and All Amenities  
are Closed

### New Year's Eve

Office  
9:00 am – 2:00 pm  
Golf Shop:  
Last golf cart in by 3pm  
Sports Grill:  
7:00 am – 3:00 pm  
( to prepare for the New  
Years Eve Party)  
Tennis Shop:  
8:30am – 2:00 pm

### New Year's Day

Hours for all amenities are  
weather dependent.  
Please watch your email  
for updates.

# Viva Las Vegas New Year's Eve

Saturday, December 31, 2005

Blackjack • Craps Tables  
Roulette • Slot Machines  
Texas Hold'em • Prizes

Live Entertainment by  
IDLE HANDS

\$95.00 per person

Includes Buffets, Gaming,  
Entertainment, and  
Hosted Bar from 8 pm - 11 pm

### Dinner Buffet

7:00 pm to 9:00 pm

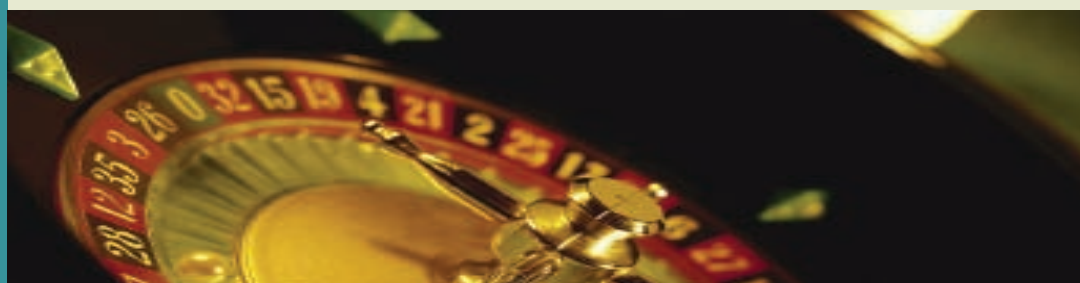
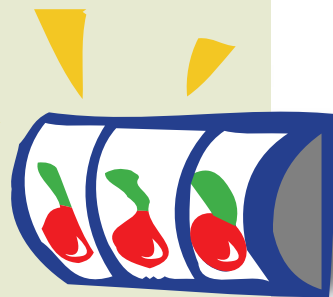
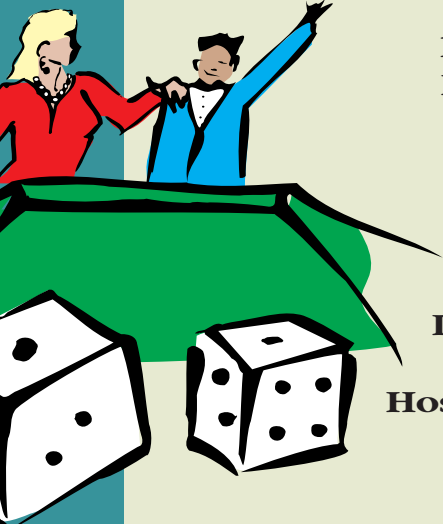
### Night Owl Buffet

11:00 pm to 12:30 pm

Champagne Toast at Midnight

Reservations are Required and Limited  
972-529-6779

*Many of your fellow members have already begun  
making reservations so don't delay!*



### A Note Of Thanks...

On Oct 24 members of Eldorado Country Club came together to raise over \$42,000 in support for our son-in-law's extended battle with cancer. Your energy, kindness and generosity remind us of what makes this "club community" so very special. My daughter and her family are very grateful for your efforts. Lana and I would like to express our personal appreciation to all those who participated and those who made this wonderful event possible; Todd Froehle and Tim Brown and especially Marilyne Todd, Linda Beavers, Eva Bazan and Diana Sammons.

-Lynn and Lana Settle

### MEMBER OF THE MONTH

Tommy Brock



#### Lessons of Membership at Eldorado Country Club -

My family and I have been members at Eldorado Country Club for the past 10 years. After 18 months of living in Western Canada, our family arrived in McKinney in January, 1995. I must tell you that the golf season in Canada is very short. That leads me to my first lesson, you can play golf year round at Eldorado Country Club. I truly believe that is what started my passion for the game and for the club. When you combine year round golf, wonderful amenities, great dining and the friendly casual place that is Eldorado you get a membership experience that few other clubs can offer. Lesson two, yes, there are other clubs out there, but none that come close to providing a membership experience that Eldorado does.

Lesson three is a tip from an experienced member at Eldorado: It's all about the membership. Since you are reading this, you must particularly enjoy being around a friendly casual place that is warm, welcoming and giving. Eldorado is a club with a wonderful staff that appreciates the members. Eldorado is a place where there is always something going on, always someone to meet and most importantly, always a great place to socialize or have a quiet dinner. That is the Eldorado experience.

Lesson four, share this experience. I have developed many close personal relationships with fellow members at Eldorado. I want to encourage each of you to invite your friends, neighbors and acquaintances to experience Eldorado and everything it has to offer. I can think of no better way to enhance your club experience than by sharing it with friends.

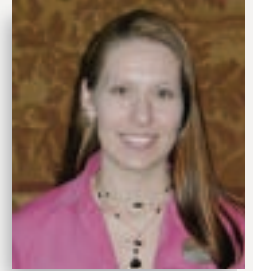
Tommy Brock

Eldorado Member since 1996

*We want to know why Eldorado is the club for you! If you have a great memory or just plain enjoy being a member at Eldorado and would like to be featured in our Member of the Month column please email Colleen in the Membership office at [civey@eldoradocc.com](mailto:civey@eldoradocc.com).*

I just love the holiday season!

It means family and friends gathering and reminiscing about great memories while creating new ones to remember in the years to come! Your membership at Eldorado Country Club has hopefully created many fond memories for you and family. Remember the time you shot par on the course, aced the other team in a doubles match, or came to eat dinner in a room full of friends?



Fond memories, like smiles, are contagious. You can share your memories of Eldorado by inviting someone you know to consider membership at Eldorado Country Club. You are enjoying spending your time here, maybe they would too!

If you would like more information about referring a friend, neighbor or associate, please stop by the club, call me at 972-529-6779 ext. 202., or email me at [civey@eldoradocc.com](mailto:civey@eldoradocc.com). Eldorado is a great place, and just like a holiday dinner, the more the merrier!

#### Welcome our Newest Members

Mac Newton	Lawrence & Laura Johnson
Matt & Andrea McGuire	Kevin & Heather Spann
Wendall & Oleta McGuire	Baine & Juli Brooks
Blake & Lisa Morrow	Greg & Karina Harris
Edward & Dorothy Thacker	David & Amy Bear
Dave Hartsell & Jill Kesinger	Errol & Lou Turner
Jerry Escobedo & Family	

### ELDORADO LADIES ASSOCIATION ANNUAL CHRISTMAS BAZAAR

The Eldorado Ladies Association will hold its Annual Christmas Bazaar on Tuesday, December 6th. Shopping will begin at 10:30, featuring McKinney Merchants and Artisans — a great one-stop-shop for all those on your Christmas list! A luncheon will be served at 11:30, with entertainment provided by the A Capella Choir from McKinney North High School. You are encouraged to bring non-perishable food items for donation to the Food Pantry (peanut butter, cereals, juice, cookies, canned goods). This is a popular and well-attended event, so please phone the Club at 972-529-6779 by Friday, December 2nd, and secure your reservation.

## Food & Beverage Corner

Chad A. Boyle, Food & Beverage Director

### Chef Nick's Birthday Bash Wine Dinner

Wednesday December 14, 2005

6:30 pm Reception & 7:00 Dinner

*Eldorado Goes Low Country. Enjoy samplings from Charleston, South Carolina!*

#### Reception

A selection of fresh shell oysters and Champagne

#### First Course

Carolina Colossal Shrimp & Southern Grits  
With Tasso Ham gravy

#### Second Course

Fried Green Tomatoes & Fresh Goat Cheese  
With McClellanville lump  
Crab Corn Salsa

#### Third Course

Low Country Oyster Bouillabaisse with Fresh Corn  
Andoullie Sausage in Saffron Pernod Broth

#### Fourth Course

Pan Seared Kobe Prime Filet Mignon  
With Duck Confit fingerling potato and pearl onion hash  
and truffle butter

#### Finale Course

A study of Chocolate and Bananas

Reservations are Limited to 40 members and are Required.

Please RSVP to 972-529-6779 today!

\$95.00 per person



## Sunday Brunch

### BREAKFAST ONLY

9am-11am

Adults-\$9.95

### BRUNCH

11am-2pm

Adults-\$14.95

Seniors (55 and up)-\$9.95

Children (6-12)-\$5.95

Children 5 and under- FREE

### Breakfast Buffet

Omelets & Waffle Station

Soup and Fresh Salads

Entrée Selections

Chef Carving Station

Peel & Eat Shrimp

Smoked Salmon

Dessert Station

## Annual Children's Breakfast with Santa

Saturday, December 10<sup>th</sup>

9:00 am – 11:00 am

### The Breakfast Buffet will include

Scrambled Eggs, French Toast, Bacon, Sausage, Hashbrowns, Fresh Seasonal Fruit

### The Children will enjoy

Photos with Santa (remember to bring your camera!!) Magic Show with "Bonkers the Clown" Games & Gifts

We encourage everyone to bring a new unwrapped toy for underprivileged children. (The toy collection is through the McKinney Fire Department)

Adults: \$8.95

Children: \$4.95

Reservations are required and limited

Please RSVP to 972-529-6779



## Last Chance HOLIDAY BASH

Friday, December 23<sup>rd</sup>, 2005

6:00 pm til 9:00 pm

Come join your friends at the Club as you unwind this Holiday Season.

We will be hosting a Casual Adult Holiday Bash featuring a delicious Buffet created by Ol' Chef Nick and his little elves.

Enjoy Live Entertainment & Dancing surrounded by great friends.

*Your first beverage is compliments of the Social Committee!*

*Happy Holidays!*

\$24.95 per person

Reservations are limited and required

Please RSVP to 972-529-6779 today!

## Golf Shop News

The golf season has come and gone and brings us to the end of another great year at Eldorado Country Club.

We have had a lot of great things happen this year:

- The Collin County Ryder Cup stays another year at Eldorado!
- Chris Opie shot rounds of 70-68 in the Club Championship to win his third in a row!
- Ken Farrell, with the help of a lot of great Members, took our Junior Golf Program to a level that was unthinkable!
- The Senior Men's group has the highest level of participation ever!
- A very special group of ENGA & EWGA ladies have shown an act of compassion for one person in need that from were I sit was one of the most generous acts I have ever seen.

All the Golf Shop Staff would like to thank you for your support all throughout the year and we look forward to serving you in 2006. May God bless you and your entire family during this very special time of the year.

**Remember!**  
All credit books  
must be redeemed  
by December  
31st, 2005.

## Handicap Committee Update

The Eldorado Country Club Handicap Committee would like to review with you how handicap strokes are allocated to each hole on our course.

The #1 handicap hole is the one that a mid-high handicapped player most needs a stroke to **TIE** a low handicapper based on all of the actual scores entered into the GHIN system. This process is continued for all 18 holes, with an adjustment being made so that the odd stroke holes will all fall on the front nine. Please remember that the allocation is not directly related to "how hard the hole is" but rather the difference in average scores between the low and mid-high handicappers. We know this may be somewhat confusing, but once you understand it, we think you will agree how fair this process that is outlined by the USGA Handicap System really is. Any of us on the committee would be happy to discuss this with you if you would like further clarification.

We would also like to assist any golfer who is not comfortable with entering his or her scores on the GHIN System computer in the golf shop. If you are having trouble or haven't taken the time to learn how to do this, just mention this to someone in the golf shop and they will certainly help. Many of us have become very comfortable with this and feel that it is a wonderful system. Also remember that you may print a copy of your handicap label at any time from this computer.

We are pleased with the progress we have made, but know that there are still matters that may need more discussion and we welcome your input. The members of the committee are:

Diana Sammons	Marion Dantzler	Dianne Riddle
Marilyne Todd	Jim Staif	Tim Brown



## HOLE-IN-ONE

On October 13th, Don Christensen made a hole-in-one on hole #7, with yardage of 190, using a 3 wood. There to witness was his wife.

On October 27th, George Adams shot a hole-in one on hole #7, with yardage of 175, using a 5 iron. There to witness was Marion Dantzler, George Fuller and Mike Banas



Tim Brown

## Eldorado C.C. cards Dallas Mornings News title

By **RICHARD DURRETT** / *The Dallas Morning News*

FARMERS BRANCH - Eldorado Country Club head professional Tim Brown had a big advantage in Monday's Dallas Morning News Tournament of Champions team event at Brookhaven Country Club.

"I was the head pro at Brookhaven for eight years," Brown said. "I still knew the greens and told my team where to hit it."

Brown's team of Chris Opie, Dianne Riddle and George Adams listened well. They stayed in the fairway, hit greens in regulation and made crucial putts. Eldorado and The Golf Club of McKinney had a low-ball, low-net combined score of 126. Eldorado won in a scorecard playoff. The Golf Club of McKinney won the 2003 team event in a scorecard playoff.

Opie, 33, the three-time defending Eldorado club champion, vaulted his team to victory with birdies on the final four holes, including a 25-foot putt on the final hole.

Brown was low pro of the 13 groups, shooting 70 on the Masters Course, which he's played many times.



## EWGA News

Congratulations to Lana Settle for winning the 2005 ENGA Championship Tournament!

Other winners:

### First Flight

Gross: Carolyn Finch  
Net: Crickett Gorman

### Second Flight

Gross: Judy Perry  
Net: Rebecca Dominey

### Third Flight

Gross: Amy Fuqua  
Net: Peggy Wildrich

The ENGA Christmas Luncheon will be held at Eldorado Country Club on Wednesday, December 7, at 11:30am. On Sunday, December 11 will be the ENGA couples progressive Christmas party with appetizers at Linda and John Beaver's home at 5:30pm and desserts at Jo and Ben Brister's home at 7:00pm. Sign up to bring a dessert or appetizer and come celebrate the holiday season.

## Golf Events:

December 10th: MGA's AB & CD Tournament

December 31st: Last day to use Golf Shop Credit Book!

## Winter Course Policy

It is imperative that we adhere to the 90 degree rule for cart traffic during the winter months in order to keep the fairways as lush as possible until the grass begins to grow again next year.

# Eldorado Golf Shop Christmas Party & Sale

Tuesday, December 13th  
5:00 pm - 9:00 pm

**ALL IN-STOCK MERCHANDISE**  
**10% OFF**

Gift Wrapping will be available!

Enjoy complimentary hors d'oeuvres, spirits and soft drinks while you check off everyone's wish list!

## Golf Reminders

The Golf Shop Christmas Party will be December 13th from 5:00pm-9:00pm!

Remember that all Credit Book must be used by December 31st.

The MGA will play December 10th with a 9:00 am shot-gun. Breakfast will be served instead of lunch.

## On The Greens

What a difference a year makes! At the middle of November, we were almost 12 inches below our normal annual rainfall total. At the same time last year, we were in a surplus of 12 inches total annual rainfall. That is a total difference of 24 inches in one year. Coupled along with that, we are setting record high temperatures for November. For this reason, we have to water the golf course quite a bit more than we normally would at this time of year. Add onto that the fact that we are seeding fescue and over seeding some of the tee boxes and there is potential for a little bit of standing water. Please be patient while we work through this tough period.

Winter turf injury or "winter kill" is a result of subfreezing temperatures coupled with inadequate soil moisture. The moisture that is held in the soil acts as an insulator to the root system for those deep freezes. A lack of moisture will result in desiccation of those roots and turf injury will result. At this time it is a concern of mine that if the temperatures were to drop below freezing for too long some turf injury could result. For this reason, we will continue to moderately water the golf course fairways and roughs.

Paul Hagy  
Golf Course Superintendent

*Golf News*



# Tennis News

## EWTA News

**The EWTA end of the year Christmas party will be held December 8th, 2005 @ 6:30 pm.**

## Events:

**Sunday, December 4th, 2005**

**Christmas time Mixer and Sale - \$17 per player or \$30 per couple**

**Mixer 2 pm-5 pm  
Sale open till 6!**

Come early and pick your products from the shop before everyone else. Can't stay for the mixer? Come for the Sale. All items will be priced to move. The participants of the mixer will receive special discounts and there will be special packages available on order for the big day! We look forward to this fun event every year so get on the list in the pro shop ASAP!



*Just call her Santa Sharon!*



To the Membership of Eldorado:

Thank You goes out to the Membership of Eldorado for a wonderful tennis year. The TEAM ELDORADO accomplished many great things this year. The EWTA was generous enough to help out and donate our new scorecards for all the courts. The club has taken a methodical approach to replacing ballasts,

bulbs, and capacitors for lights that have vastly improved individual lights on the top courts. We will continue with this project to try and achieve optimal lighting on the top courts.



The EWTA and the club combined to complete the water cooler tower project by including the magnetic bulletin area to further inform the membership of activities at this high traffic area. The club has also replaced the tennis shop's outdated computers with a network of up to date systems that will help the pro

shop better communicate and work with the membership.

I would like to congratulate the following juniors for qualifying for championship or super championship rank over the past year: Nick Thompson, Nick Phelps, Will Johnson, Landon Weiss, Christian Baum (supers), Hannah Weise (supers), Ben Jasny (supers), and Tyler Zodrow. I would like to congratulate our Men's 3.5 team for making it to the city playoffs for the 3rd year in a row. We have special congratulations for our Senior Ladies 3.5 team that made it to Sectionals at Newk's Ranch in New Braunfels October! Way to go Ladies! I want to also congratulate our EWTA for their Lillyan Pivin Tournament and Silent Auction that raised over \$17,000 dollars for the American Cancer Society. That is a great year by all accounts. Thanks again for everyone's hard work to make Eldorado the place to be in 2005!

See you on the courts!

*Grady E. McKee,  
Director of Tennis*



*Bulletin Board - Before & After*



*Water Tower- Before & After*



*New Score Cards donated by the EWTA*

# Card Room Winners

**October 21st** – Shirley Powers, E.J. Nowak, Gloria Erickson

**October 28th** – Patti Duit, Agatha Donatelli, Ivone McCarty

**November 4th** – Leah McCarthy, Nancy Hamrick, Barbara Bethel

The Wednesday Bridge Group meets each week at 1:00 pm. The Friday Morning Bridge Group plays every week at 9am. For More Information about Eldorado Bridge Groups contact Leah McCarthy at 972-548-8240

For More Information about Couples Bridge Contact Shirley Powers at 972-529-9201



## December Aerobics Schedule

### Monday

8:15 - 9:15 AM  
Pilates  
**Cindy**

### Tuesday

8:15 - 9:45 AM  
Kickboxing  
Weights • Abs  
**Lorraine**  
7:15 - 8:30 PM  
Yoga\*\*  
**TBA**

### Wednesday

8:30 - 9:45 AM  
Yoga\*\*  
**Deborah**

### Thursday

8:15 - 9:45 AM  
Total Body  
Conditioning  
**Carla**

### Friday

8:15 - 9:30 AM  
Yoga\*\*  
**Shannon**

### Saturday

8:15 - 9:30 AM  
Cardio/Sculpt  
**Julie**

\*\*Please bring your own yoga mat\*\*

## EMAIL Addresses

We want yours! If you are not currently receiving email updates please call or email us your current email address. We will add you to our database and keep you updated on all events here at the club.

Civey@eldoradocc.com or 972-529-6779 ext. 202

**There is still time to plan the perfect holiday party. Big or small Cathy in the Catering Office has a few dates still available and great ideas to make your party a hit. Call her today at 972-529-6779 ext. 226 or email [ctaylor@eldoradocc.com](mailto:ctaylor@eldoradocc.com)**

## Hours of Operation:

### Golf Shop

Tuesday-Sunday 7:00am-6:00pm

### Practice Range

Tuesday-Sunday 7:00am-5:30pm\*

\*or closes 30 min before dusk

### Sports Grill Food Service

Tuesday-Saturday 7:00am-9:00pm

Sunday 7:00am-8:00pm

### Bar Service

Tuesday-Saturday 7:00am-10:00pm

\*Sunday 7:00am-9:00pm

\*Alcoholic beverages will not be served until noon on Sundays

### Tennis Shop

Tuesday-Thursday 8:30am-9:00pm

Friday-Saturday 8:30am-6:00pm

Sunday 10:00am-6:00pm

### Sunday Brunch

Breakfast Buffet 9:00am-2:00pm

Soup & Salad Bar 11:00am-2:00pm

Full Buffet 11:00am-2:00pm

Sunday Attire Only! No Denim Please.

### Fitness Center

Tuesday-Friday 6:00am-9:00pm

Saturday & Sunday 7:00am-8:00pm

### Valet Parking

Sunday 11:00am-2:00pm

### Office Hours

Monday-Friday 8:30am-5:00pm

## Club Telephone Numbers

Clubhouse 972-529-6779  
Golf Shop 972-529-2770  
Tennis Shop 972-529-2775  
Fax 972-529-2475

## Club Staff

Chad Boyle Food and Beverage Director ext. 205  
Colleen Ivey Membership Director ext. 202  
Tim Brown Head Golf Professional ext. 222  
Paul Hagy Greens Superintendent  
Grady McKee Head Tennis Professional ext. 218  
Sharon Inge Club Controller ext. 206  
Nick Totten Executive Chef ext. 215  
Cathy Taylor Catering Director ext. 226  
Kris Smith Fitness Director ext. 216

## Board of Governors

Raj Bhargava President  
Dave Wildrick Vice President  
Vernard Grimes MGA Representative  
Carolyn Philo EWGA Representative  
Jan Crawford ENGA Representative  
Sally Cooper Social/Ambassador  
Jim Staif Senior Golf Representative  
Debbie Denissen Tennis Representative  
Linda Grimes At Large Representative  
Lynn Settle At Large Representative  
Tommy Brock At Large Representative



cboyle@eldoradocc.com  
civey@eldoradocc.com  
tbrown@eldoradocc.com  
phagy@eldoradocc.com  
grady@gradytennis.com  
singe@eldoradocc.com  
ctaylor@eldoradocc.com

## Membership Committee

Rod Boaz Tommy Brock Marion Dantzler  
Marilyne Todd Scott Moltzan Burke Summers  
Dan Allen Paula Summers Luis Bazan  
Ron Harper Connie Harper Martha Honea  
Bob Philo John Svetina

Anyone interested in joining the Membership Committee and making a difference at your Club, contact Colleen in the Membership Office today!



**ELDORADO**  
COUNTRY CLUB

2604 Country Club Drive  
McKinney, TX 75070

First Class Presorted  
U.S. Postage  
PAID  
Ft. Worth, TX  
Permit No. 2237



## New Year's Eve Celebration • Saturday, December 31st 2005

This event sells out every year! Full of Gaming Tables, Food & Cocktails, Music & Celebration this event is sure to be a hit! Don't be left out, reserve your table today!

### DECEMBER 2005 AT ELDORADO

SUNDAY	MONDAY	TUESDAY	WEDNESDAY	THURSDAY	FRIDAY	SATURDAY
<div style="background-color: #003366; color: white; padding: 10px; border: 1px solid black;"> <b>January 1 Club will open weather permitting Please watch your email</b> </div>						
4 Sunday Brunch 11:00am - 2:00pm <b>TENNIS MIXER &amp; SHOP SALE 2PM-6PM</b>	5 CLUB CLOSED	6 Eldorado Ladies Association Christmas Bazaar 10:00am	7 <b>ENGA Christmas Luncheon</b> <i>Bridge 1:00pm</i>	8 <b>EWTA Christmas Party 6:30pm</b>	9 <i>BRIDGE 9:00AM</i>	10 <b>MGA Tournament 9:00am Shotgun</b> <i>Breakfast with Santa 9-11am</i>
11 Sunday Brunch 11:00am - 2:00pm <b>ENGA PROGRESSIVE DINNER</b>	12 CLUB CLOSED	13 <b>Golf Shop Christmas Party &amp; Sale 5-9pm</b>	14 <b>Chef Nick's Birthday Bash Wine Dinner 6:30pm</b> <i>Bridge 1:00pm</i>	15	16 <i>BRIDGE 9:00AM</i>	17
18 Sunday Brunch 11:00am - 2:00pm	19 CLUB CLOSED	20	21 <i>Bridge 1:00pm</i>	22	23 <i>BRIDGE 9:00AM</i> <b>Last Chance Holiday Bash 6-9pm</b>	24 <b>Holiday Hours Club closes at 3pm</b>
25 CLUB CLOSED NO SUNDAY BRUNCH	26 CLUB CLOSED	27	28 <i>Bridge 1:00pm</i>	29	30 <i>BRIDGE 9:00AM</i>	31 <i>Viva Las Vegas New Year's Eve Party 7:00pm</i>